

Fast, Accurate Lipid Results

The CardioChek PA is a cost-efficient, user-friendly diagnostic point-of-care analyzer, which accurately determines multiple patient values.



Fast

Results in less than 2 minutes

Portable

Handheld, battery-operated

Patient-Friendly

Small sample (fingertick) 15-40 μ L

Quality

CLIA-waived, FDA-cleared, CE-marked
CRMLN-certified for CHOL and HDL test strips
Meets National Cholesterol Education
Program (NCEP) Guidelines



High ROI

Rapid throughput and low waste,
with minimal start-up cost



Available PTS Panels® Test Strips

Customize your diagnostic offerings with a variety of PTS Panels test strips for use with the CardioChek® PA analyzer. Our test strips offer an easy, efficient method for point-of-care diagnostic testing and Health and Wellness Screening.



3 Three-Analyte



LIPID Panel Test Strip

Measures: Total Cholesterol, HDL Cholesterol & Triglycerides
Calculates: LDL Cholesterol, Total Cholesterol/HDL Ratio



CHOL+HDL+GLU Panel Test Strip

Measures: Total Cholesterol, HDL Cholesterol & Glucose
Calculates: Total Cholesterol/HDL Cholesterol Ratio

2 Dual-Analyte



CHOL+GLU Panel Test Strip

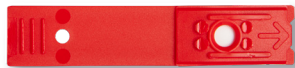
Measures: Total Cholesterol & Glucose



CHOL+HDL Panel Test Strip

Measures: Total Cholesterol & HDL Cholesterol
Calculates: Total Cholesterol/HDL Cholesterol Ratio

1 Single-Analyte



TOTAL CHOLESTEROL Test Strip

Measures: Total Cholesterol



HDL CHOLESTEROL Test Strip

Measures: HDL Cholesterol



TRIGLYCERIDES Test Strip

Measures: Triglycerides



GLUCOSE Test Strip

Measures: Glucose

To place your order, call +1 (317) 870-5610.



PTS Diagnostics
Office: +1 (317) 870-5610 FAX: +1 (317) 870-5608
Toll-Free in the US: 1 (877) 870-5610